

## Mould temperature alarm interface for operators

simple, audible and visual alarms

K-Face (Basic)



- K-Face Basic: Four alarm relays for simple machine control
- K-Face Advanced: 24 relays for greater machine control
- Uses temperature data from K-Paq, K-Kontrol & K-Rock
- Audible & visual interface for operators
- Alarms when to drop a 2nd shot of foam & when to remove arm from oven
- Alarms when to apply internal air pressurisation & when to remove arm from cooler
- Use with or without PC

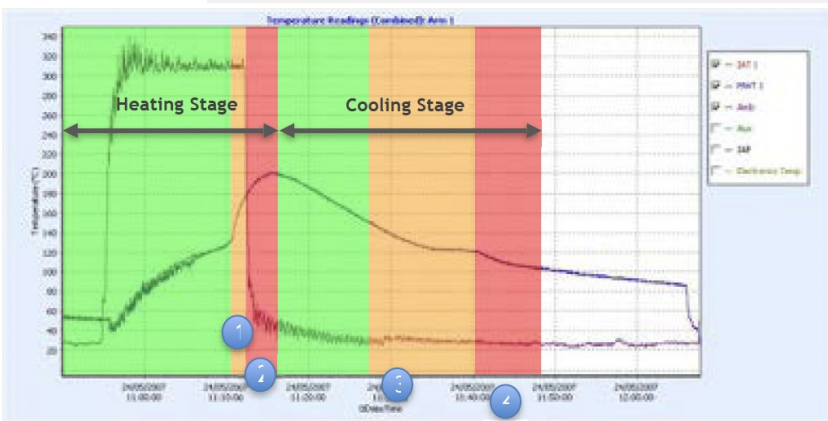
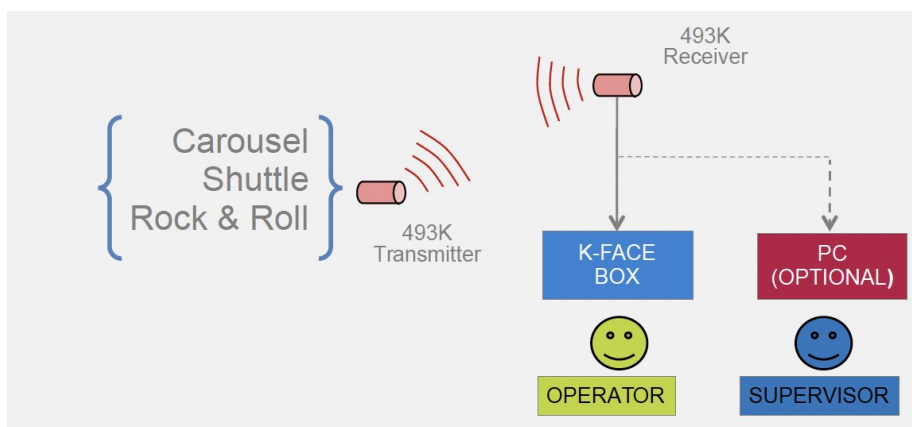
K-Face (Advanced)



### What is K-Face?

K-Face Basic is an LCD screen output that displays the temperature on one channel to the machine operator. This alerts the operator as to when the mould is ready to be removed from the oven (or, in the case of an open-flame machine, when to turn off the gas) and when to exit the cooler.

It also has one further intermediary alarm in the oven which can be used to tell the operator when to drop the second shot of material and one alarm in the cooler which could be used to tell the operator when to turn the compressed air on, say for internal mould cooling. It is a self-contained box that can sit by the control panel.



Alarm	Alarm Temperature (choose one temperature for each alarm)
1	130C (266°F), 140C (284°F), 150C (302°F), 160C (320°F).
2	180C (356°F), 190C (374°F), 200C (392°F), 210C (410°F).
3	120C (248°F), 130C (266°F), 140C (284°F), 150C (302°F).
4	80C (176°F), 90C (194°F), 100C (212°F), 110C (230°F).

### K-Face Specifications

Installation	Self (plug and play)	Qualified Technician
Temperature Input channels	One per K-Face box	16
Normal Heating Process Indicator	Solid GREEN lamp	Provides 24 hour zero volt-age relays that are used to control the roto machine (requires PLC integration)
Prepare to drop 2nd shot of material or exit oven	Solid AMBER lamp & siren	
Exit Oven Now alarm (overcook imminent)	Solid RED lamp & siren	
Normal Cooling Process Indicator	Flashing GREEN lamp	
Prepare to pressurise mould or exit cooler	Flashing AMBER lamp & siren	
Exit Cooler Now alarm	Flashing RED lamp & siren	